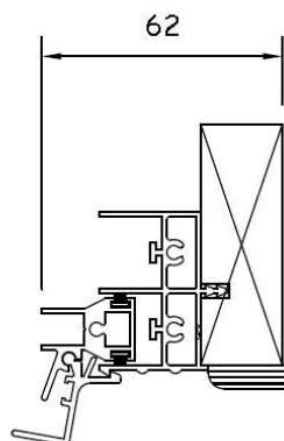
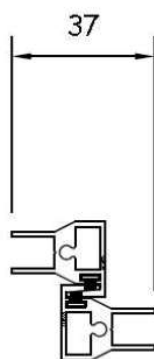
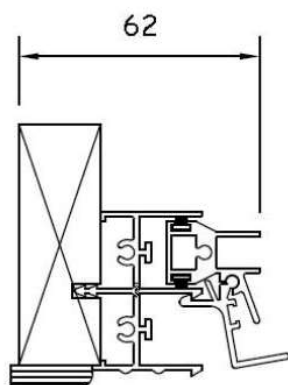
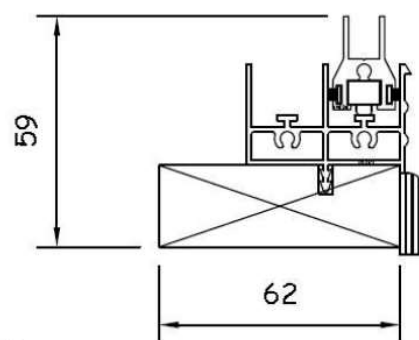


Section A-A



Section B-B.

LEFT HAND (LH) VERSION PANEL POSITION SWITCHED

Specification:

Aluminium 6063T6 alloy to BS EN 755 standard, powder coated to BS 6496 to 60 micron finish.

Stock finishes: White - Interpon SA 098E high gloss, anodised.

The sub-frame is manufactured from primed high quality, environmentally certified (MTCs) engineered timber. Standard sizes 45mm x 21mm & 62mm x 21mm.

All frames are factory glazed.

Standard gasket colour is black.

All frames include pvc-u trim as standard - Painted MDF or PEFC timber available upon request.

In line with our company policy of continuous product development and improvement, Clearview reserves the right to make minor alterations to specification without notice.

Classic Horizontal Slider

Optional Extras

white gasket

locking fitch catch

Chubb lock

travel limit stop

25mm x 25mm box support bar where stacked

white aluminium coupling / stacking interlock

Trickle vents / acoustic trickle vents

RAL colour

flyscreen

Timber sizes other than standard



Type: Classic 2 Pane Horizontal Slider Right Hand
Reveal Fix

Date: 30/1/2013

Drg. No. SS2 RH RF

Scale: 1:20 & 1:2(at A4)

EMAIL: info@clearviewsg.co.uk
TEL: 0114 294 5018