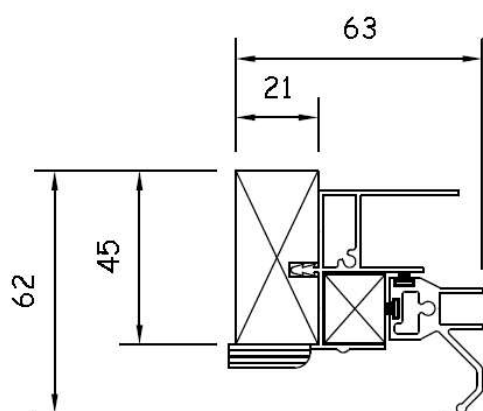
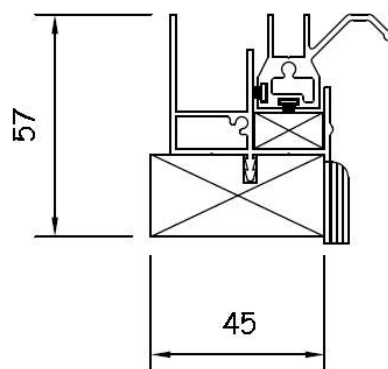


Section A-A



Section B-B

Specification:

Aluminium 6063T6 alloy to BS EN 755 standard, powder coated to BS 6496 to 60 micron finish.

Stock finishes: White - Interpon SA 098E high gloss

The sub-frame is manufactured from primed high quality, environmentally certified (MTCS) engineered timber. Standard sizes 55mm x 21mm & 70mm x 21mm.

All frames are factory glazed.

Standard gasket colour is black.

All frames include pvc-u trim as standard - Painted MDF or PEFC timber available upon request.

In line with our company policy of continuous product development and improvement, Clearview reserves the right to make minor alterations to specification without notice.

Lift Out

Optional Extras

white gasket

Chubb lock

white aluminium coupling / stacking interlock

Trickle vents / acoustic trickle vents

RAL colour

flyscreen

Timber sizes other than standard



EMAIL: info@clearviewsg.co.uk
TEL: 0114 294 5018

Type: Classic Lift Out Face Fix

Date: 30/1/2013

Drg. No.

LO FF

Scale: 1:20 & 1:2 (at A4)