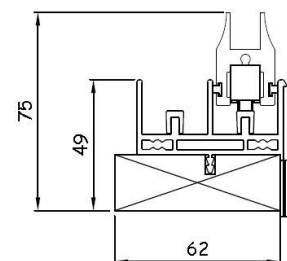


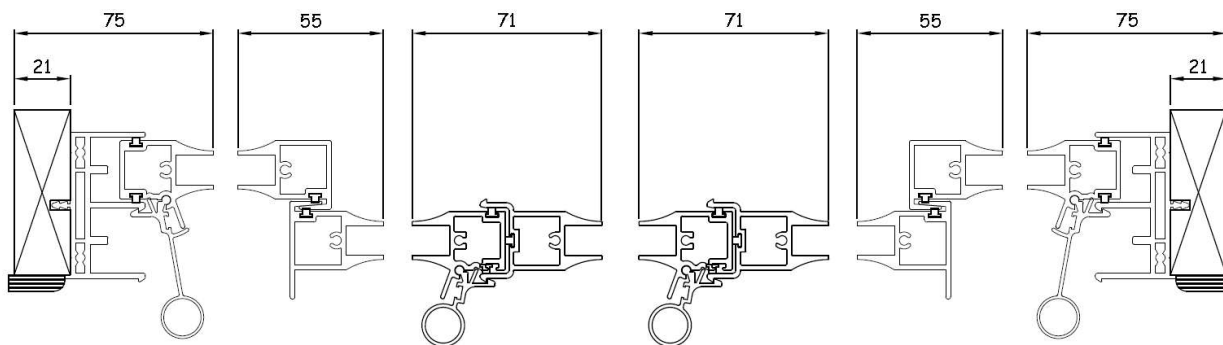
Section A-A detail.



Forte Horizontal Slider

Optional Extras

white gasket
locking fitch catch
Chubb lock
travel limit stop
25mm x 25mm box support bar where stacked
white aluminium coupling / stacking interlock
Trickle vents / acoustic trickle vents
RAL colour
Timber sizes other than standard



Section B-B detail.

Specification:

Aluminium 6063T6 alloy to BS EN 755 standard, powder coated to BS 6496 to 60 micron finish.
Stock finishes: White - Interpon SA 098E high gloss, brown - van dyke and silver anodised.
The sub-frame is manufactured from primed high quality, environmentally certified (MTCs) engineered timber. Standard sizes 62mm x 21mm & 70mm x 21mm.
All frames are factory glazed.
Standard gasket colour is black.
All frames include pvc-u trim as standard - Painted MDF or PEFC timber available upon request.

In line with our company policy of continuous product development and improvement, Clearview reserves the right to make minor alterations to specification without notice.

Drg. Title:

Forte Horizontal Slider
5 Pane Face Fix

Scale: 1:30 & 1:2 (at A3)

Date: 14 April 2014

Drg. No. HHS5 FF



EMAIL: info@clearviewsg.co.uk
TEL: 0114 294 5018