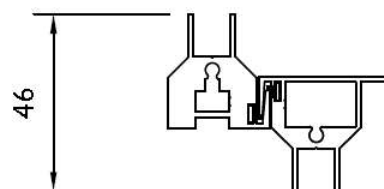
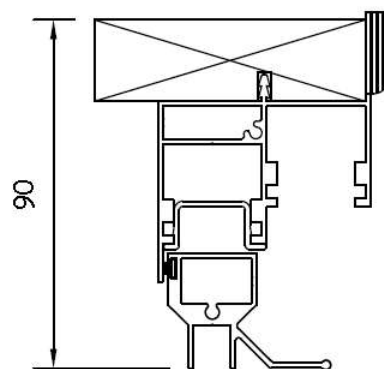
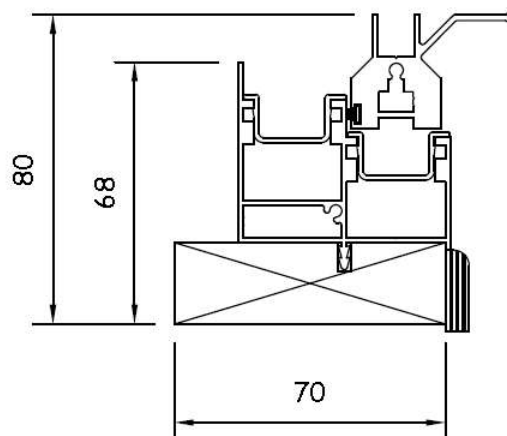


Section B-B



Section A-A



Specification:

Aluminium 6063T6 alloy to BS EN 755 standard, powder coated to BS 6496 to 60 micron finish.

Stock finishes: White - Interpon SA 098E high gloss, brown - van dyke and silver anodised. The sub-frame is manufactured from primed high quality, environmentally certified (MTCS) engineered timber. Standard sizes 62mm x 21mm & 70mm x 21mm.

All frames are factory glazed.

Standard gasket colour is black.

All frames include pvc-u trim as standard - Painted MDF or PEFC timber available upon request.

In line with our company policy of continuous product development and improvement, Clearview reserves the right to make minor alterations to specification without notice.

Forte Balanced Vertical Slider

Optional Extras

locking fitch catch
white gasket
white aluminium coupling / stacking interlock
Trickle vents / acoustic trickle vents
RAL colour
flyscreen
Timber sizes other than standard



Type: **Forte Balanced Vertical Slider
Reveal Fix**

Date: 30/3/2015

Drg. No. HBVS RF

Scale: 1:20 & 1:2 (at A4)

EMAIL: info@clearviewsg.co.uk
TEL: 0114 294 5018