

# Insert

## Ins:

## Panel Sliding Orientation

Ins

- Fixed Glazing Panel
- Sliding panels – n/a



Front



Back

# Technical Information

## Panel Configuration

- Drilled on site by the fitter and screw fixed, a more permanent application securely fixing the panel in situ.

## Panels removable

Subject to configuration

## Size

Min 200w x 200h, 4mm glass max 1200 x 2000, 6/6.4mm glass max 2000mm x 2000mm  
(units over 1200mm in height will default to 6mm glass)

## Glass

Standard glass 4mm tough - Max glass thickness 6.8 laminate

## Thermal Performance: Variable

Standard 2.8 w/m<sup>2</sup>K / \*Low-E 1.9 w/m<sup>2</sup>K

## Acoustic Performance: Variable

Mid-Range Spec\* 45dB / High spec 49dB  
\*Certificated

# Specification

- Aluminium 6063 T6 alloy to BS EN 755 standard, power coated to BS 6496 to 60 micron finish.
- Stock finishes: White – Interpon SA098E high gloss, anodised.
- All Frames are factory glazed.
- Standard gasket colour is white.
- Trim not Included.

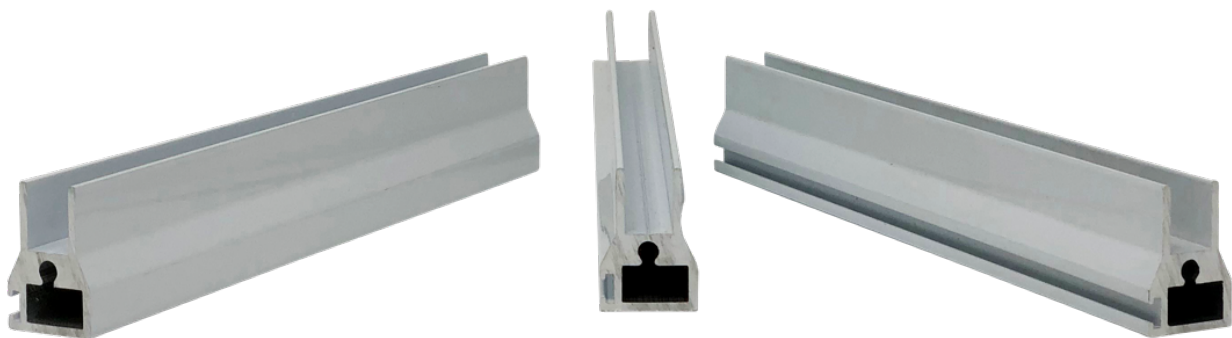
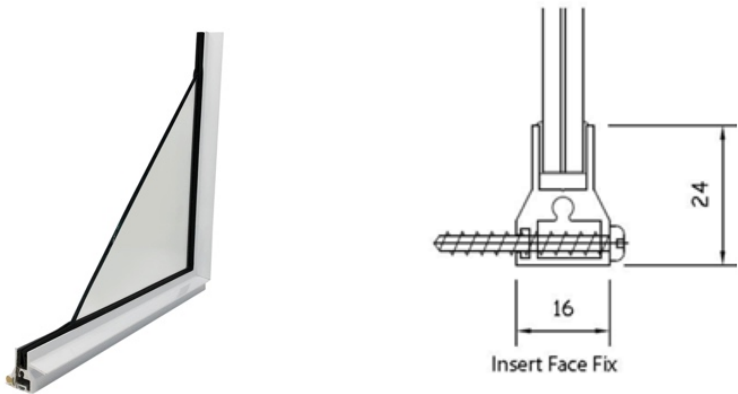
In line with our company policy of continuous product development and improvement Clearview reserves the right to make minor alterations without notice.

# Optional Extras

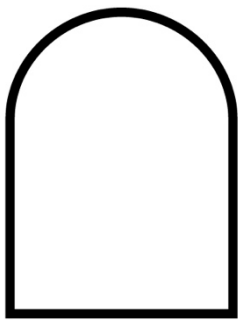
- Black Gasket
- RAL colour
- Timber sizes other than standard
- Fly screen
- Trim

*Please scroll down for more information*

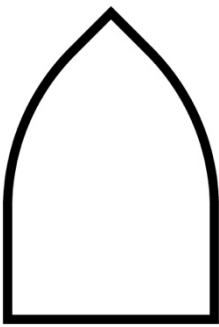
# Standard Frame Diagram - Ins Version



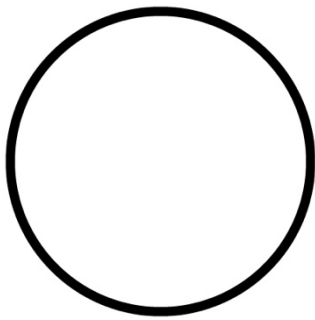
# Frame Shape Options



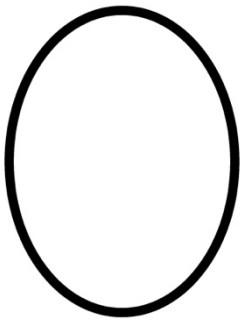
Standard Arch



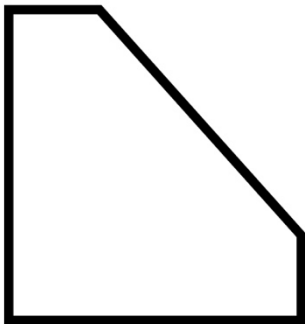
Gothic Arch



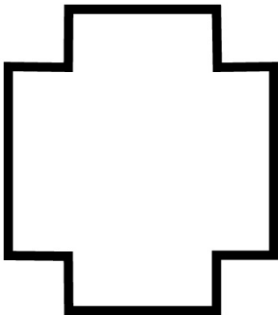
Round



Oval



Chamfered



Notched \*

*\* Notched window showing 4 notches – notches are charged per notch*

*Templates are required from the customer*



Please get in touch with one of our friendly team today for help & advice.



Online Help Centre  
[Visit our Online Help Centre >>](#)



Fast Quote  
[Get a fast quote online >>](#)



Email  
[info@clearviewsg.co.uk](mailto:info@clearviewsg.co.uk)



Phone  
0114 294 5018

